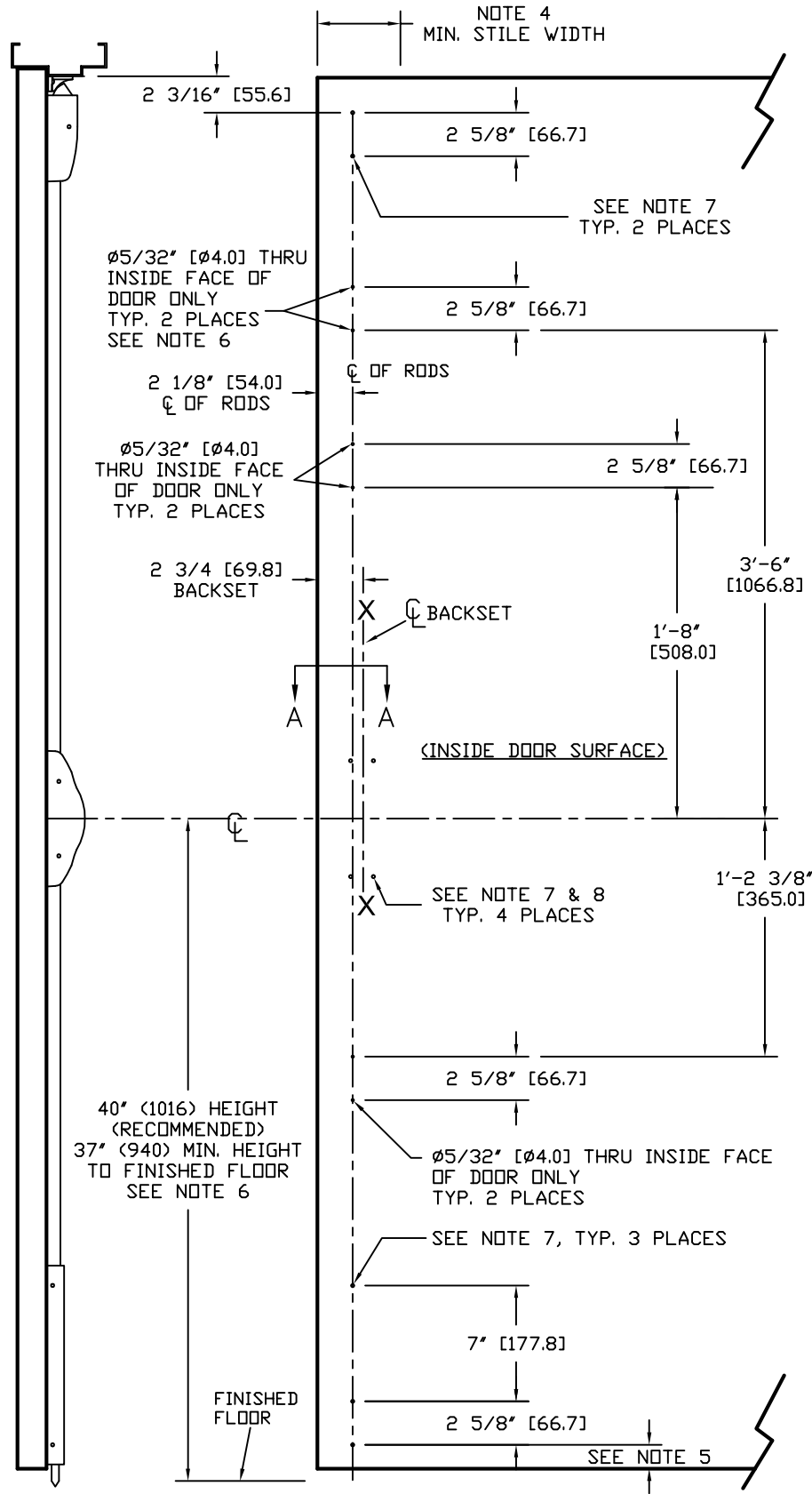
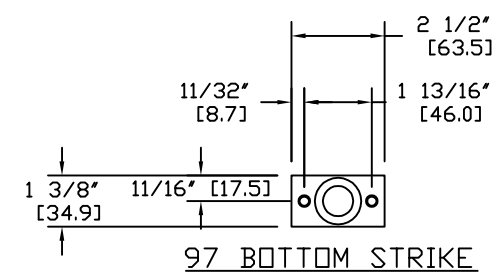
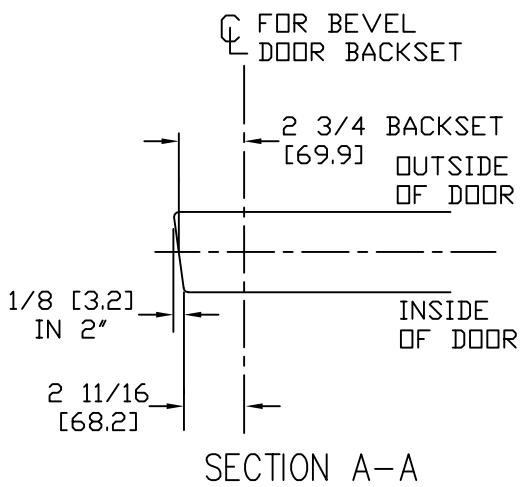


- NOTES:
- DO NOT SCALE DRAWING.
  - DIMENSIONS ARE IN INCHES [mm].
  - LHR DOOR SHOWN.
  - MINIMUM STILE WIDTH: 4-1/2" [114.3].
  - DIMENSION FROM BOTTOM OF DOOR TO BOTTOM HOLE IS 1-7/16" [36.5] OR, IF A RAISED OR ELEVATED SILL CONDITION EXISTS, MOVE HOLE LOCATION UP BY THE THICKNESS OF THE SILL CONDITION FROM THE BOTTOM OF DOOR.
  - REQUIRED FOR DOOR HEIGHTS OVER 7'-0", OR IF DISTANCE BETWEEN DEVICE CENTER LINE TO TOP OF DOOR EXCEEDS 44".
  - DRILL & TAP 1/4-20 THREADS THRU INSIDE FACE OF DOOR ONLY. IF REQUIRED, THRU-BOLT HOLE SIZE 9/32" INTERIOR DOOR FACE, AND 3/8" EXTERIOR DOOR FACE.
  - PLEASE REFER TO HOLE DETAIL ON PAGE 2.



HDG. \_\_\_\_\_ DR. \_\_\_\_\_

**RESPONSIBILITY**  
 Door and Frame Manufacturers are responsible for providing adequate construction or reinforcements for proper installation of hardware shown. All architectural builders hardware must be installed on properly reinforced doors and frames regardless of the type, material or method of construction.

**TEMPLATE STEEL DOOR**  
 2001 & F2001 SERIES  
 VERTICAL ROD EXIT DEVICE  
 BP-1 MOUNTING PLATE

**DETEX CORPORATION**  
 DO NOT SCALE DRAWING  
 DATE 3-29-10 TEMPLATE NUMBER T1060 Pg 1 of 2

FOR NO TRIM:  
1/4-20 TAP  
4 PLS

FOR OUTSIDE TRIM ONLY:  
INSIDE HOLES 5/16" (7.9)  
OUTSIDE HOLES 1/2" (12.7)  
4 PLS

FOR OUTSIDE TRIM ONLY  
3/4" HOLE  
(19.1)

DEVICE

40" (1016) HEIGHT  
(RECOMMENDED)  
TO FINISHED FLOOR

1/8" (3.2) GAP ASSUMED  
(DOOR TO FRAME)

X

1 3/8"  
(34.9)

11/16"  
(17.5)

3 1/2"  
(88.9)

7"  
(177.8)

X

BACKSET

INSIDE FACE  
OF LOCK STILE  
LHR DOOR

NOTES:

1. LHR SHOWN; RHR OPPOSITE.
2. DIMENSIONS SHOWN IN INCHES AND (mm).

HDG. \_\_\_\_\_ DR. \_\_\_\_\_

**RESPONSIBILITY**  
Door and Frame Manufacturers are responsible for providing adequate construction or reinforcements for proper installation of hardware shown. All architectural builders hardware must be installed on properly reinforced doors and frames regardless of the type, material or method of construction.

TEMPLATE  
STEEL DOOR  
2001 & F2001 SERIES  
VERTICAL ROD EXIT DEVICE  
BP-1 MOUNTING PLATE

**DETEX**  
CORPORATION

DO NOT SCALE DRAWING

DATE  
3-29-10

TEMPLATE NUMBER  
T1060 Pg 2 of 2